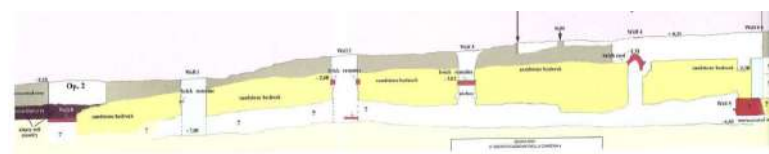




SOME WORK EXPERIENCES

ALBANIA, LIBYA, MACEDONIA ETHIOPIA, ERITREA,
NIGERIA, TANZANIA, RWANDA, INDONESIA, RUSSIA
1992-2010



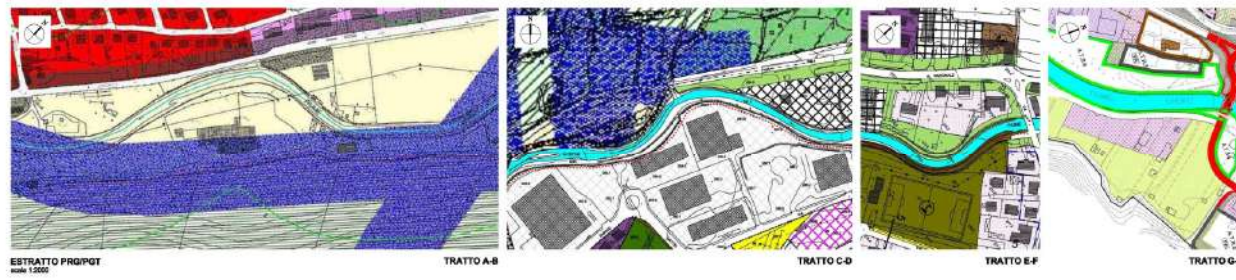
Goa Made, JombangG, no lejos de Mojokerto
East Java Island, 2010



2000 - River Restoration



CHERIO RIVER - VAL CAVALLINA, BERGAMO, ITALY ... A CASE STUDY

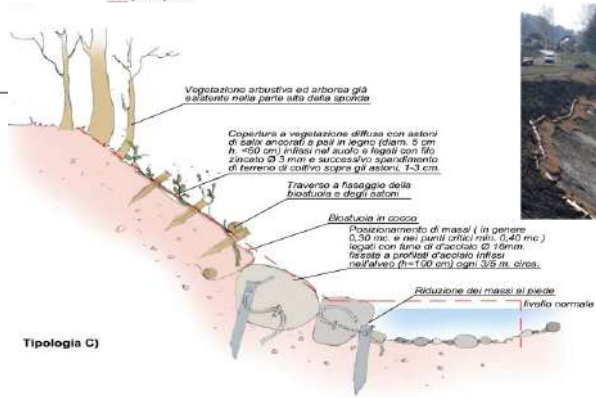


LEGENDA
canali d'acqua
corridoi di salvaguardia per nuove previsioni stradali
aree di salvaguardia, recupero e valorizzazione dei corsi d'acqua

LEGENDA
canali d'acqua
corridoi di salvaguardia per nuove previsioni stradali
aree di salvaguardia, recupero e valorizzazione dei corsi d'acqua
percorsi pubblici

LEGENDA
verde pubblico per attrezzature sportive
verde ambientale, di rispetto stradale, fiume a passeggio
percorsi pubblici

LEGENDA
perimetri edifici di trasformazione per servizi (ATS)
definiti dal documento di piano
tracciato viario locale di previsione



CONSORZIO SERVIZI VAL CAVALLINA
provincia di Bergamo
PROMOTORE
PROMOTORE
AGENZIA INTERREGIONALE PER IL FIUME PO

RIQUALIFICAZIONE FLUVIALE DEL FIUME CHERIO - SECONDO LOTTO
nel territorio di Borgo di Terzo, Entratico e Trescore Balneario
provincia di Bergamo
progetto esecutivo

Allegato C - Tavola n.1
Inquadramento territoriale



AIPo
Agenzia Interregionale per il fiume Po



LA RIQUALIFICAZIONE DEL FIUME CHERIO



Il progetto a scala territoriale e i primi interventi

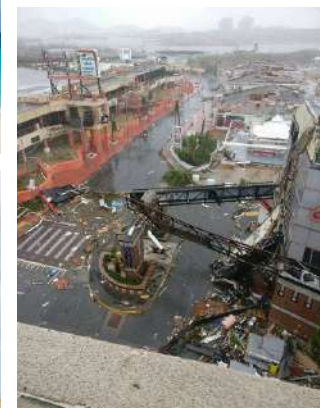
MAZZETTI DIEGO - CATTANEO RAFFAELLO
CORPONOVE

«Water resource»
and
«Water system»

Raffaello Cattaneo, Stefano Enfissi, Pier Giuseppe Fenaroli, **Diego Marsetti**, Giovanni Mazza, Mauro Perracino, Fabio Plebani, Giambattista Rivellini

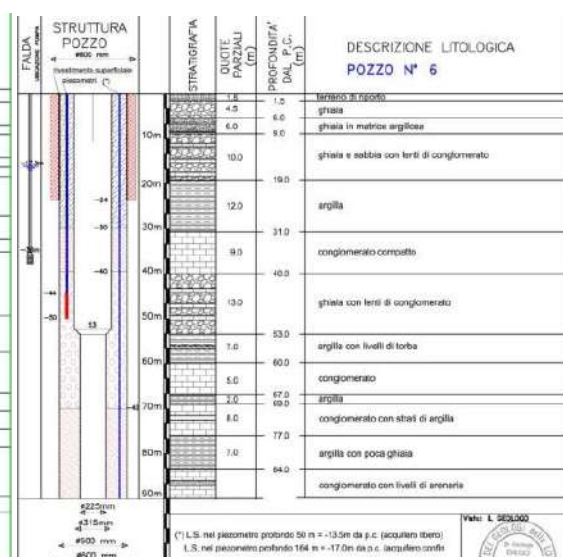
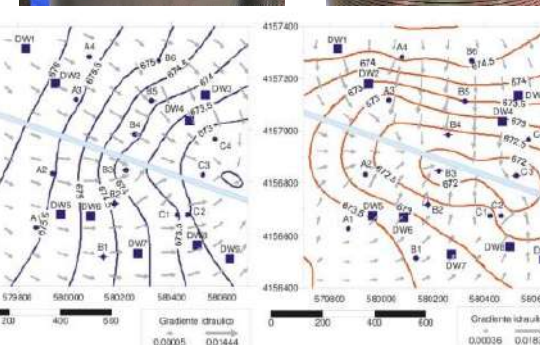


Sint Marteen
CARIBE
Netherlands
Antilles
2002-2016





2008. Project and construction of water wells for bottling at a brewery in Bergamo, Italy



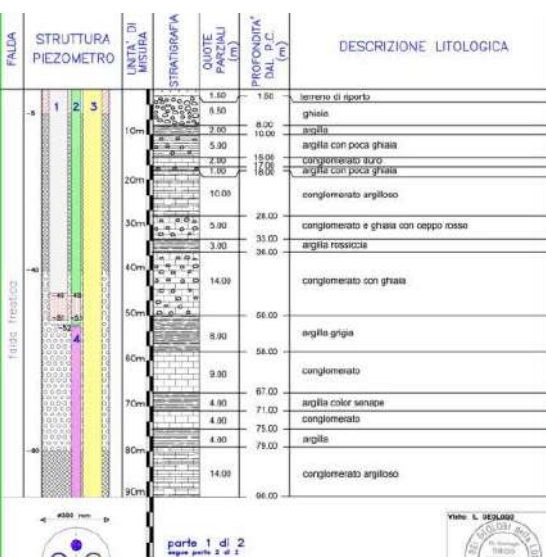
NOTE
 Pozzo installato: ATUBA tipo XH111
 Profondità: 34m - Q = 0 - 80 m³/h
 Press. = 180 - 20 m
 Profondità pompa: -38m
 Finitura: liscia

PIEZOMETRO
 con tubo fissatore
 cavi: 4x25 mm
 Tubo in PVC #315mm
 Tubo in PVC #425mm

FILTRI
 in PVC #315mm + apertura 0.3-1 mm
 Bolacca cementata (certificazione n. #508)
 Bolacca cementata (certificazione n. #111)

TAMPONE
 in argilla
 spessore 4-5 mm
 Cementazione con iniezione a sifone

ECOGEO srl - via F.lli Garbi, 2 - 24122 Bergamo - Tel 035/271155 Fax 035/239882 E-Mail ecogeo@ecogeo.net



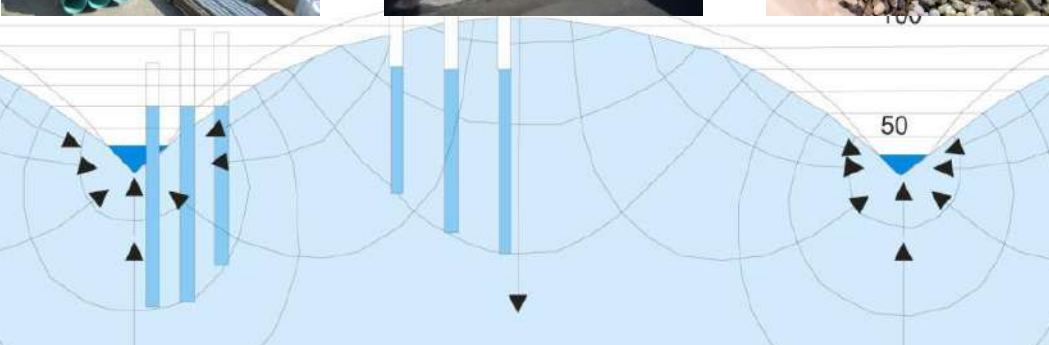
NOTE
 Pozzo installato: ATUBA tipo XH111
 Profondità: 34m - Q = 0 - 80 m³/h
 Press. = 180 - 20 m
 Profondità pompa: -38m
 Finitura: liscia

PIEZOMETRO
 con tubo fissatore
 cavi: 4x25 mm
 Tubo in PVC #315mm
 Tubo in PVC #425mm

FILTRI
 in PVC #315mm + apertura 0.3-1 mm
 Bolacca cementata (certificazione n. #508)
 Bolacca cementata (certificazione n. #111)

TAMPONE
 in argilla
 spessore 4-5 mm
 Cementazione con iniezione a sifone

ECOGEO srl - via F.lli Garbi, 2 - 24122 Bergamo - Tel 035/271155 Fax 035/239882 E-Mail ecogeo@ecogeo.net





2009 - Water treatment «MBR TECHNOLOGY» Milk Plant



Modern technologies, with regard to water treatment plants, offer more and more guarantees, excellent performance and inclusion in the landscape ever closer to the "green economy". The use of "**MBR technology**" (Membrane Biological Reactor) allows to obtain an effluent with high quality thanks to the complete removal of suspended solids, of the bacterial load and therefore better yields obtainable compared to conventional systems which base their operating principle on the capacity of certain bacterial strains to aggregate into sedimentable flakes.





DUBAI, ABU DHABI,
OMÁN, BAHRAIN
QATAR, 2010 -2015





2013. Tunisia

Environmental investigations to support preliminary design of waste-to-energy plant for urban waste. On this occasion, an award is given to Ecogeo

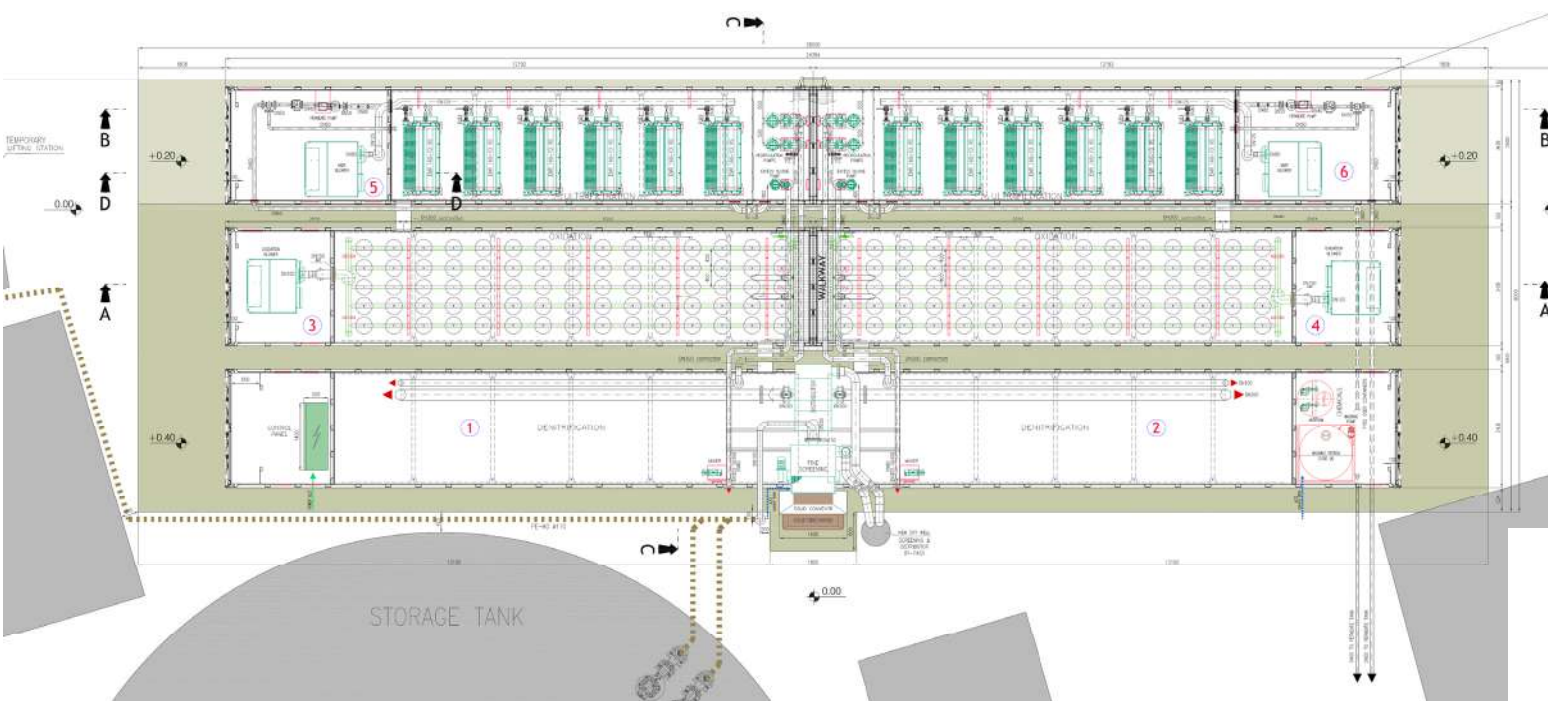


TITICACA LAKE, 2013

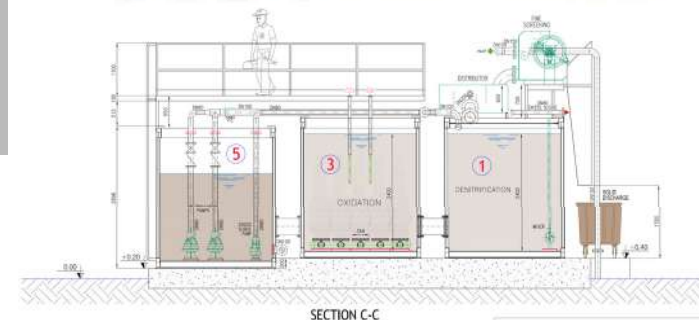
Puno - PERU

STUDIES FOR ENVIRONMENTAL RECOVERY, REHABILITATION OF THE COAST AND
IMPROVEMENT OF WATER TREATMENT IN LAKE TITICACA

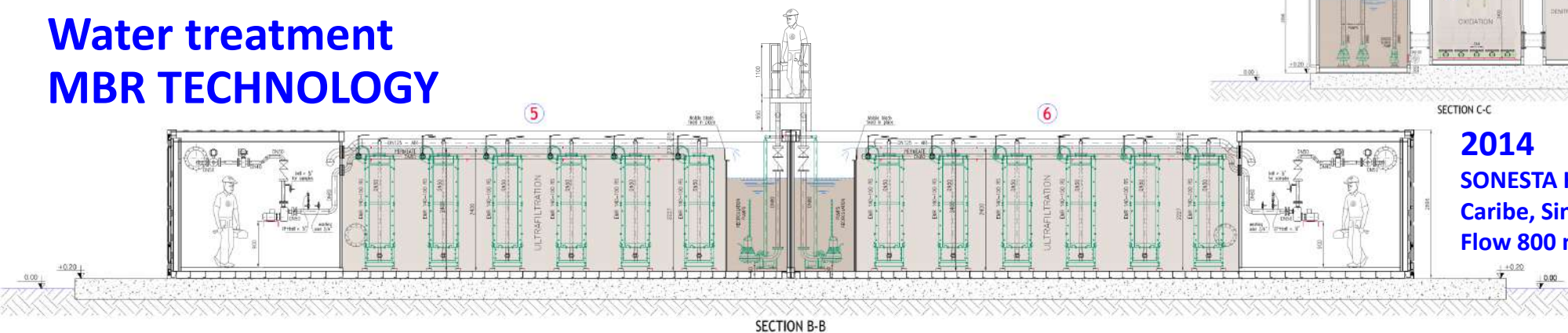




Water treatment MBR TECHNOLOGY

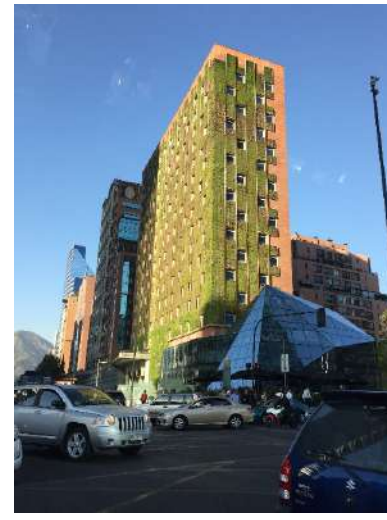


2014
SONESTA HOTEL
Caribe, Sint Maarten
Flow 800 mc/day



2014 SANTIAGO DEL CILE

Meeting at the Ministry of Industry



2014

BRITISH COLUMBIA, WESTERN CANADA LILLIOOET PL#9790

Vancouver - Canada

**GOLD, SILVER, PLATINUM, RARE EARTHS, MAGNETITE
AND AGGREGATES**
**LILLOOET PL #9790 DEPOSIT, BRITISH COLUMBIA,
WESTERN CANADA**

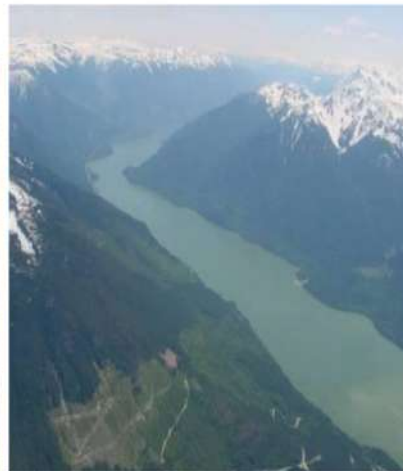
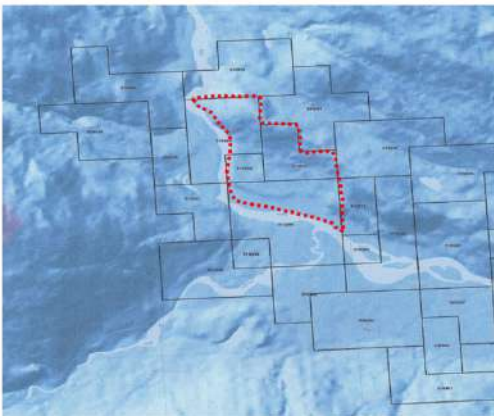


Gold (Au)
3.0 gm/ton

Silver (Ag)
1.0 oz/ton

Platinum (PT)
3.0 gm/ton

Magnetic Concentrate
(Mag Conct)
30 kg/ton

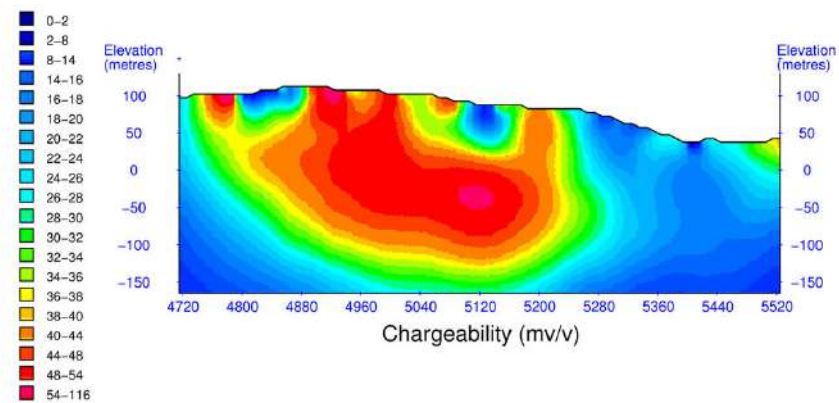
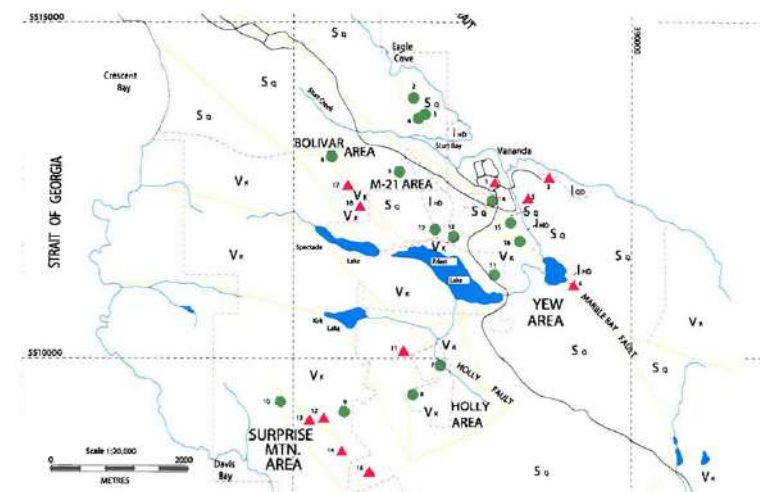
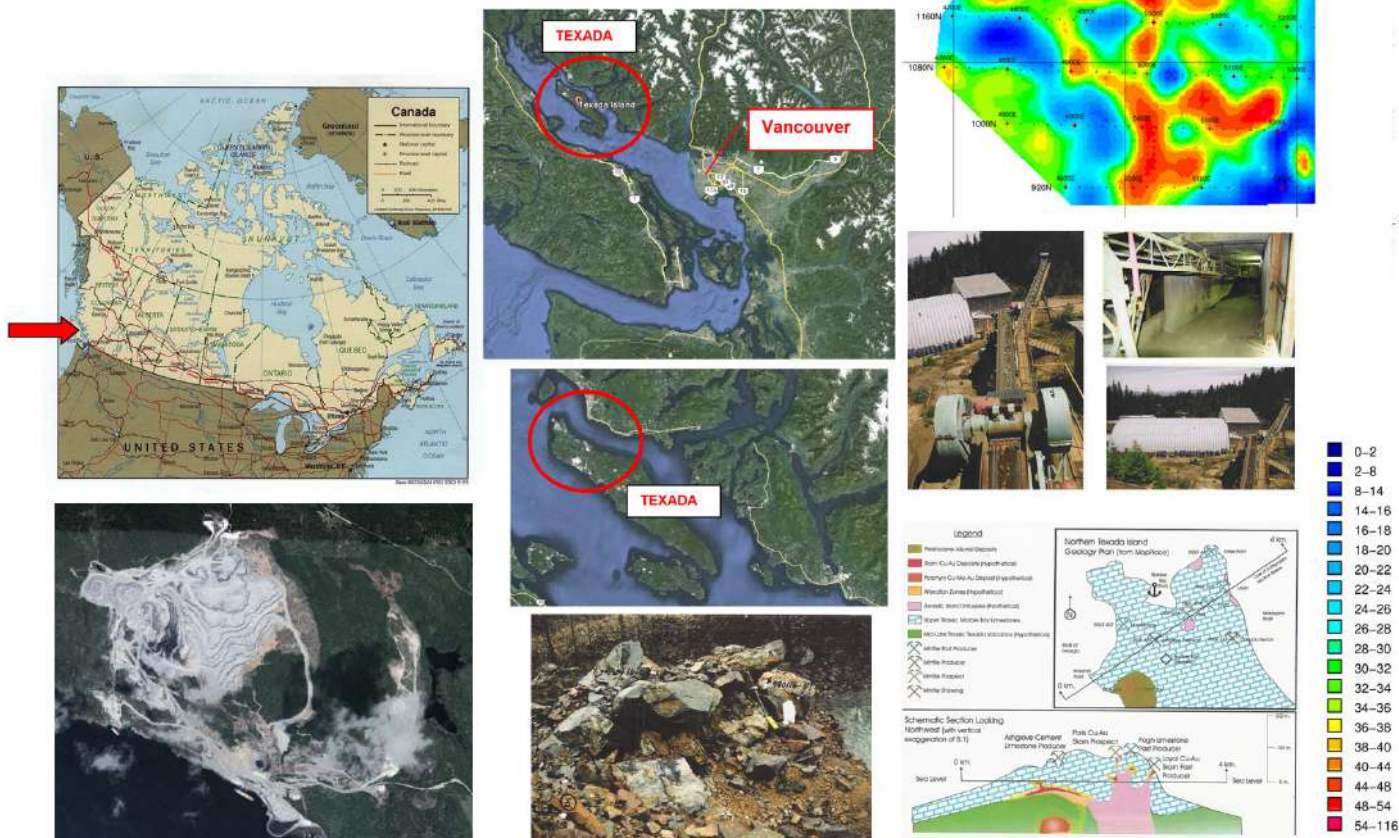


2015

BRITISH COLUMBIA, WESTERN CANADA TEXADA ISLAND PROJECT

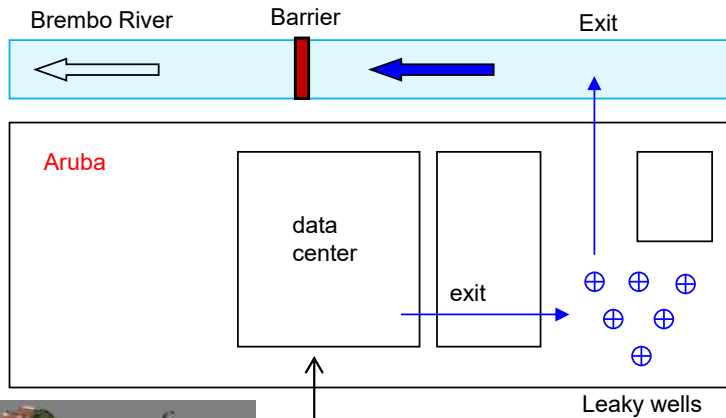
Vancouver – Canada

GOLD, SILVER, COPPER AND CEMENT
BRITISH COLUMBIA, WESTERN CANADA
ZYROX MINING COMPANY LTD



2015 - DATA CENTER Geothermal Energy

clean, alternative and renewable energy source that is based on the Earth's "heat engine"



aruba.it



OPEN CIRCUIT SYSTEM

Heat exchange by means of water pumped from an intake well and a geothermal heat pump. The water is then reintroduced into a return well downstream of the underground aquifer



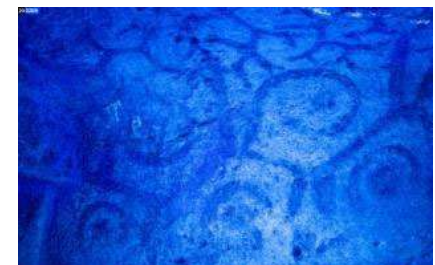
Wells

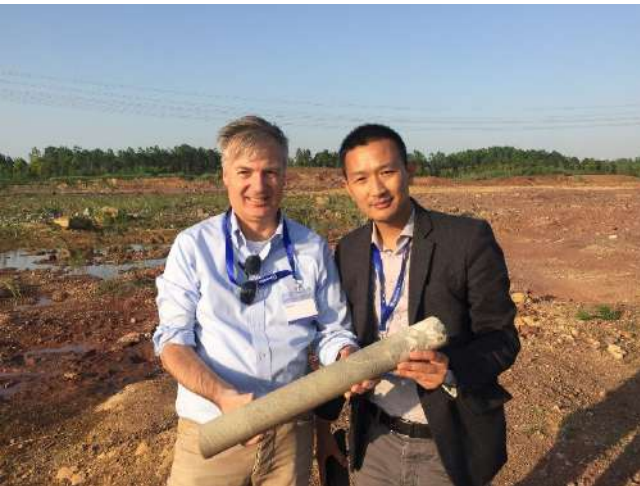
PZ1
PZ2
PZ3
PZ4



The approach of the ARUBA company has been extremely positive on the use of "Renewable Energy" in particular with the application of "Low Enthalpy Geothermal Energy" or through heat pumps.







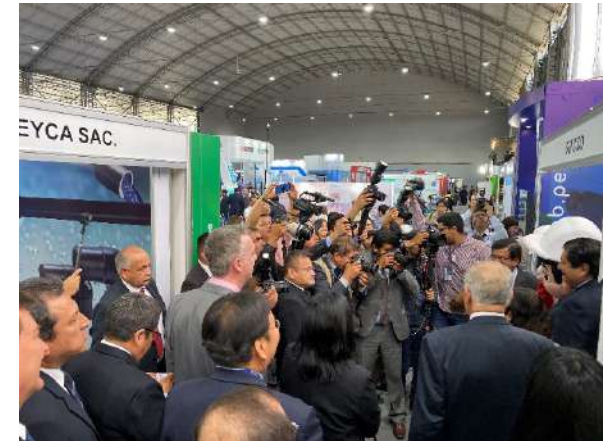
I-WTech

Italian Water Technologies

N\ yjhm1fs Nf qfs htr ufs~ ymfyijxnlsx fsi gznix
| fyjwyjfyx jsyufsyx fwzsi ymj | twj lufwzhmfyji
rs ymj 756> | fyjwyjhmstql~ kfrws Qrr f

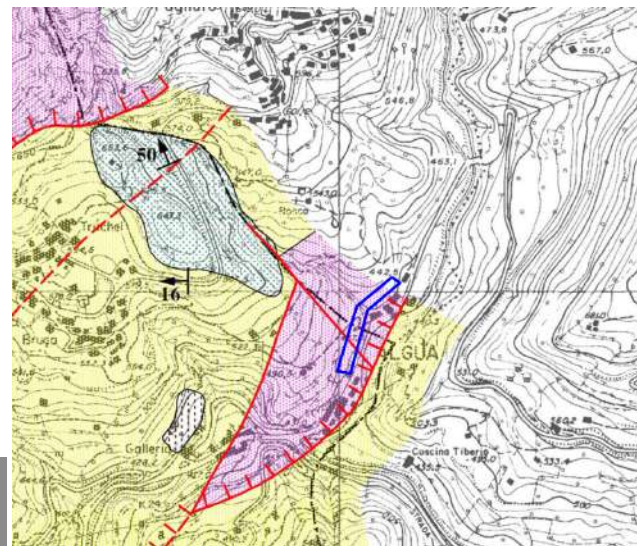


2019

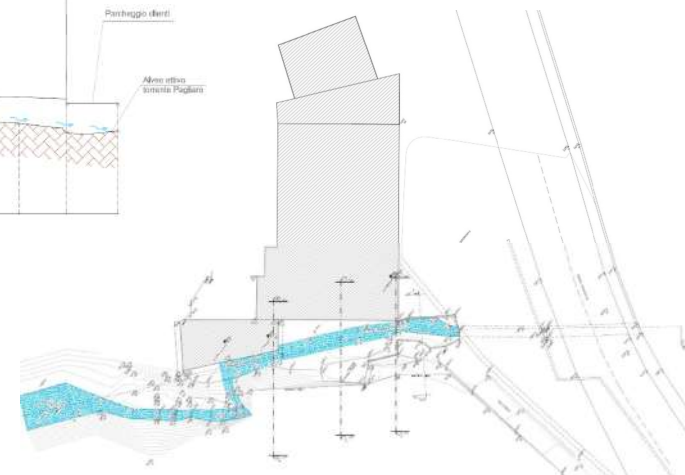
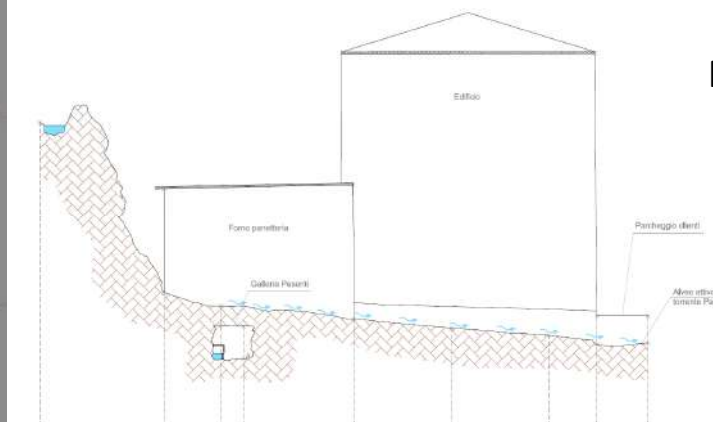




Public water manager. Innovative surveys with laser scanners, drones and structural geology in the tunnels of the early 20th century, for the protection of the drinking water that feeds the city of Bergamo



Bergamo. Italy.
Pesenti-Mainoli-Prati tunnels
Sources of drinking water
Mapping

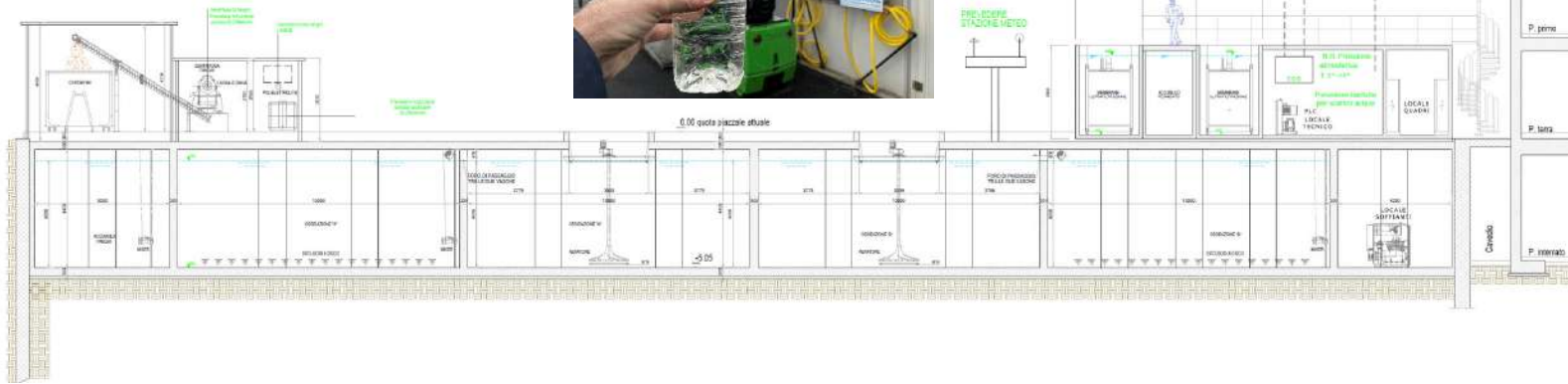
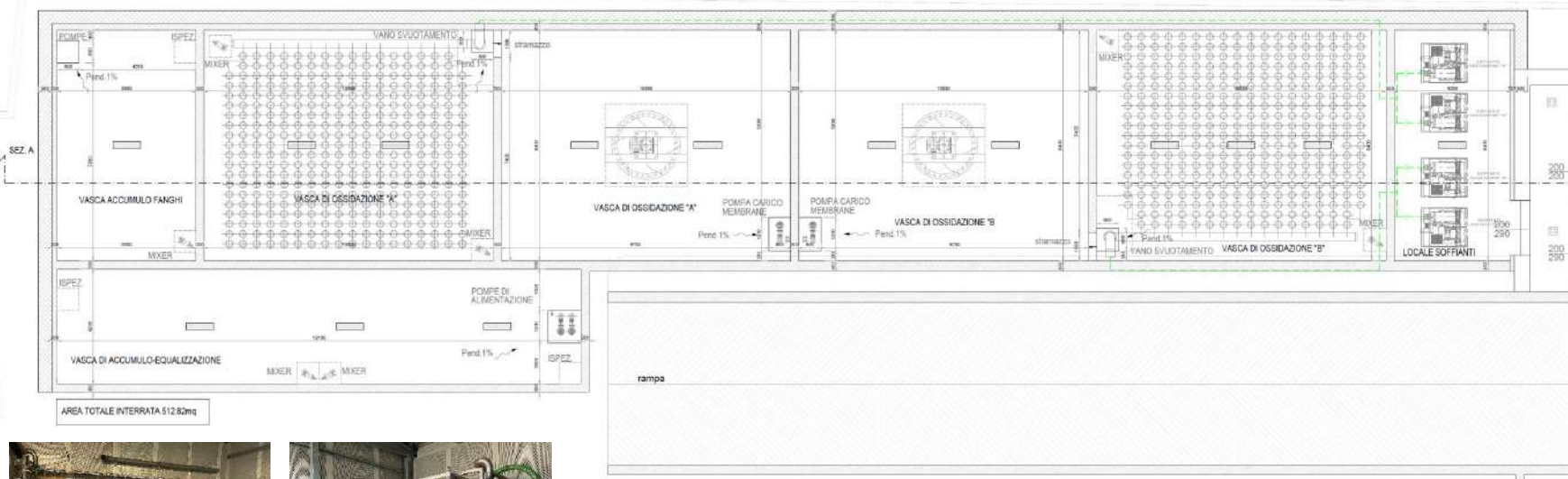


COVID 19 - EMERGENCY 24 - Armed Forces Assistance - March-May 2020



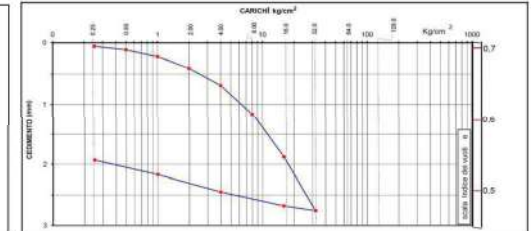
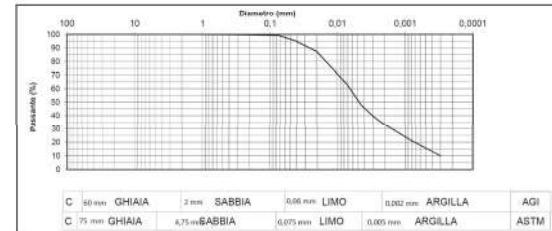
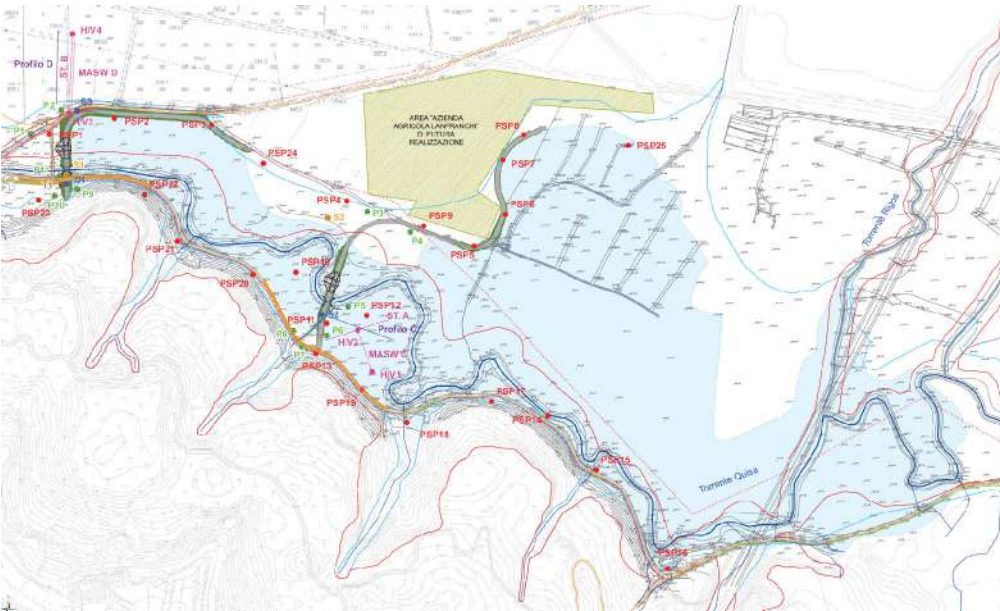
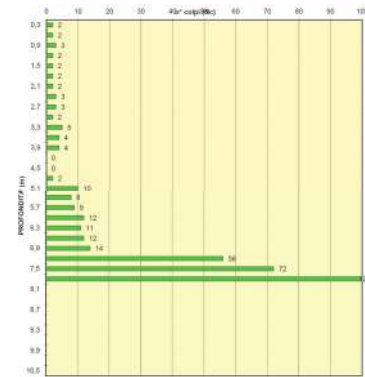
**COVID
19**





Expansion and Lamination Basin

QUISA RIVER - SORISOLE AND PALADINA, BERGAMO, ITALY



Pr. BG Comune Paladina - Quiso
 Consorzio di Bonifica della Pianura Bergamasca
 Via Gritti, 21/25 - 24100 Bergamo

Carta Tecnica Regionale
 Regione Lombardia
 Sez. C5a2 - Ponte San Pietro

Coordinate WGS 84
 lat. long. 5 064 390 N
 547 644 E

Ø 101 mm

Quota p.c.: 280,0 m slm
 Profondità totale: 10,00 m da p.c.
 L.S.: 140 m da p.c.

CAMPIONI	PROFONDITÀ CAMPIONI	POCKET	MANIFESTI	PROVE S.P.T. n° colpi a 10 cm	PROFONDITÀ	PROFONDITÀ LETTURA	PROFONDITÀ STATOGRAFICA	PROFONDITÀ PALUZZI (m)	PROFONDITÀ (m)	DESCRIZIONE LITOLOGICA	N°	PROFONDITÀ (m)
				01 63 63					0,60	Riparto ghiaioso con laterizi in trincea	02	0,60
									2,60	Detrito di versante sabbia/limosi con ciottoli subangolari alterati	03	2,60
									3,20		04	3,20
									4,40	"Cappellaccio" di alterazione della roccia con ciottoli spigolosi di flysch e arenaria Dmax: > 10 cm	05	4,40
									4,60		06	4,60
									3,40	Roccia "ana" costituita da arenaria, a grana fine di color grigio debolmente fratturata	07	3,40
									10,00		08	10,00

NOTE

- Complesse indisturbate
- ▲ Complesse semi-indisturbate
- Complesse rimaneggiate
- Prova di permeabilità "in foro"
- Filter
- Geotessile
- SPT con punta conica a 60°
- TP1: CONTINUO
- TP2: DISTRUZIONE
- TC1: CAROTIERE SEMPLICE
- TC2: CAROTIERE DOPPIO
- TR : TRINCINO

Visto: IL GEOLOGO

Dr. Geologo
 DIEGO MARINETTI
 N. 780

Pagina 1 di 1

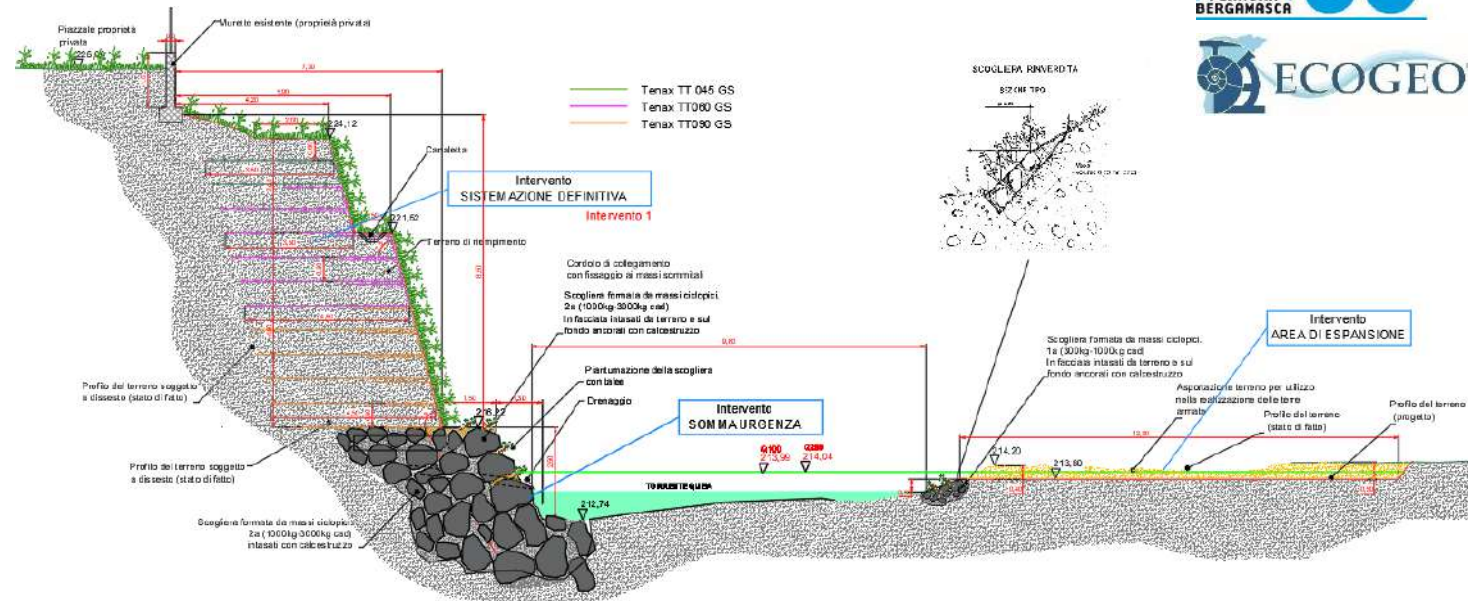
BG		Comune Paladina - Torreente Quisa		Committente Consorzio di Bonifica della Media Pianura Bergamasca Via Grillo, 21/25 - 24100 Bergamo		nr. RI: RI0393-049 n./SER./CAT.		S2	
Corta Tecnica Regionale Sez. C502 - Bergamo		Coordinate lat.: 45° 06' 351 N long.: 548° 053 E		Diametro Ø 101 mm		Siffo assicurato GEOPROVE SNO			
Data inizio lavori 09.11.2020		Data fine lavori 09.11.2020		Quota p.c. 285,0 m slm		Profondità totale 15,00 m da p.c.		L.S. 3,30 m da p.c.	
CAMPIONE	PROVA	PROFONDITÀ METRI	PROFONDITÀ PROFONDITÀ	QUOTE PROFONDITÀ (m)	PROFONDITÀ DAL P.C. (m)	DESCRIZIONE LITOLOGICA	PROFONDITÀ DAL P.C. (m)	PROFONDITÀ DAL P.C. (m)	PROFONDITÀ DAL P.C. (m)
						Suolo vegetale agricolo color marrone-bruno Suolo limoso finemente sabbioso fine	0.10	0.60	
						Chiazza di sabbia limosa con corredi Dmax: 8cm color bruno	0.70	2.40	
							3.10		
						Argilla con limo laminata con alteranze millimetriche grigiastre (argillosa) e color nocciola (limosa)	2.40		
							5.50		
						Limo con argilla sabbioso color grigio	4.00		
							9.50		
						Argilla con ghiaia e ghiaia argillosa color grigio	2.20		
							11.7		
						Ghiaia argillosa con blocchi e corredi sabbiosissimi poligonali Dmax: 30 cm	2.00		
							13.7		
						Argilla con sabbia e ghiaia in tracce color grigio	1.30		
							15.0		



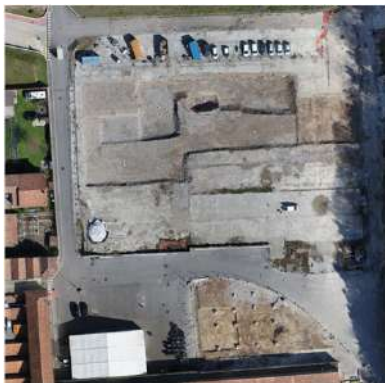
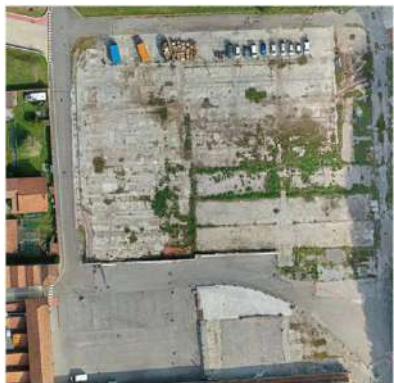
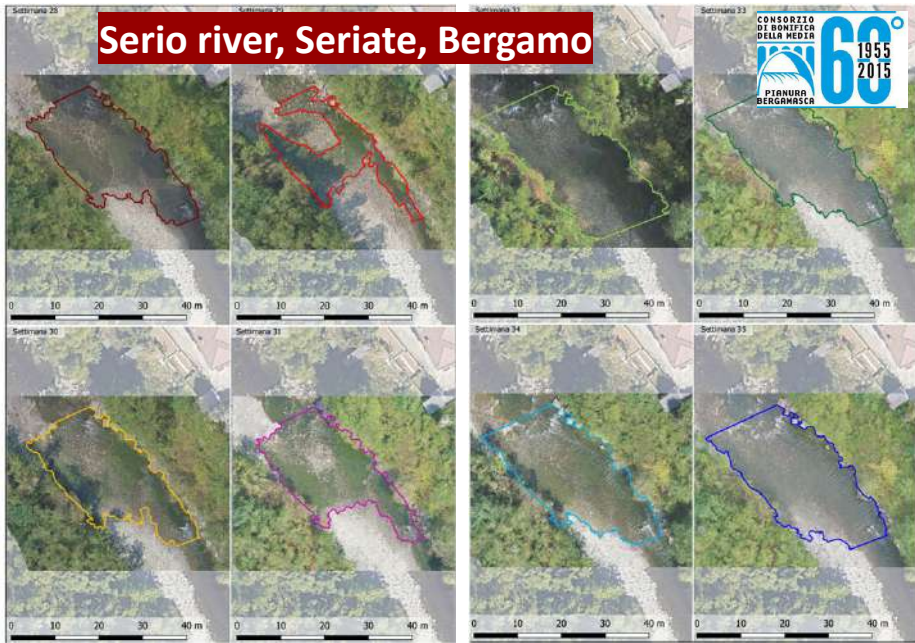
after the works

2021

landslide event - Quisa River, Bergamo, Italy



2021-23 CASE STUDIES: Environmental investigations - River monitoring



PRE - SCAVO

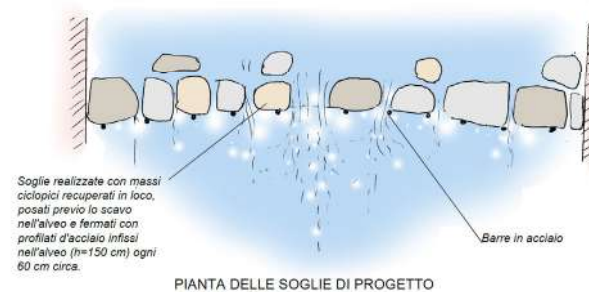
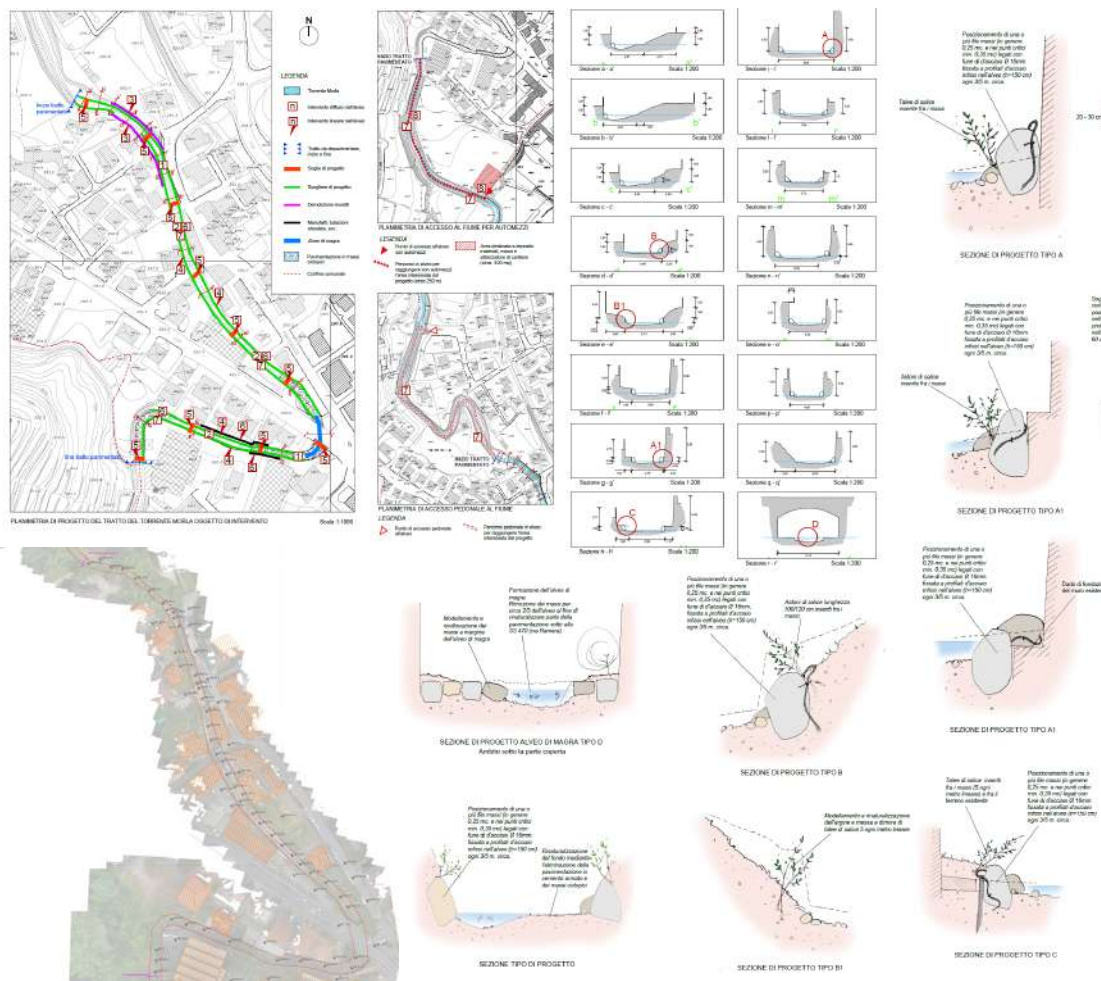
POST - SCAVO

Surface area: 140.000,00 mq
Volume: 135.000,00 mc

River monitoring, DMV – 2022 Water crisis



Bergamo, Italy Hills Park - RIVER MORLA

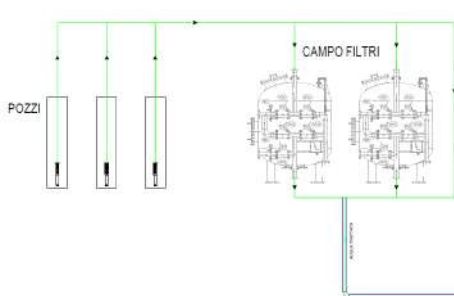
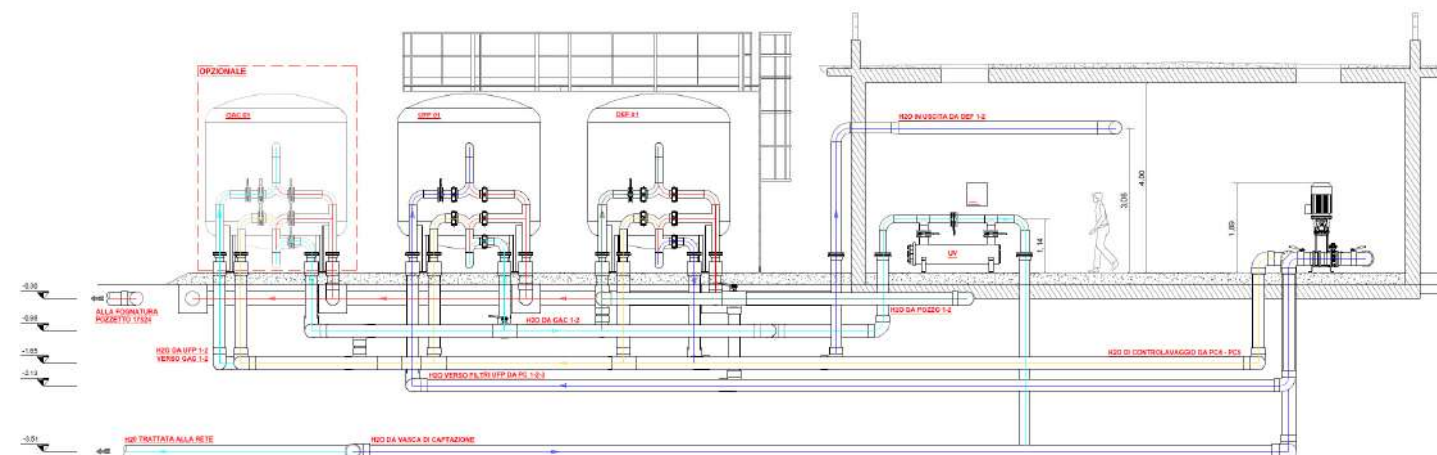




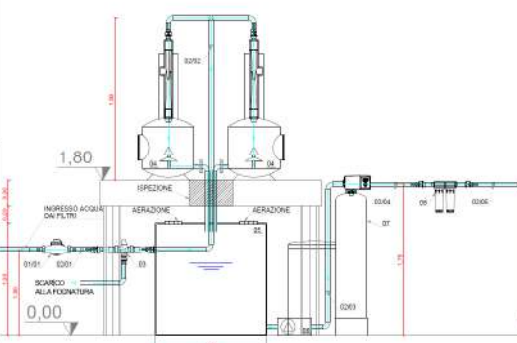
METROPOLITANA MILANESE SPA
SERVIZIO IDRICO INTEGRATO DELLA CITTA' DI MILANO

R rsjwfq| fyjwgtysl uqsyfy\ fyjw
Hjsywfqns Gfllrt1R mfs1Nfç
NUFHP UWTOJHY

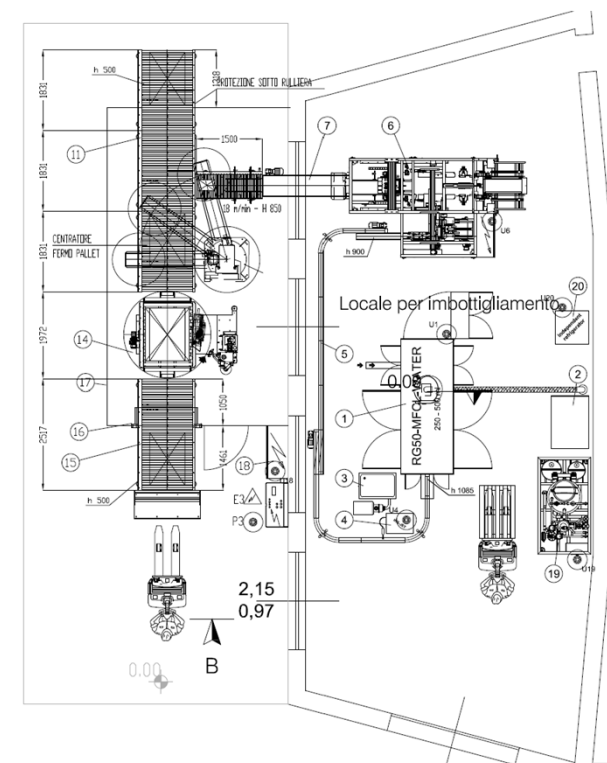
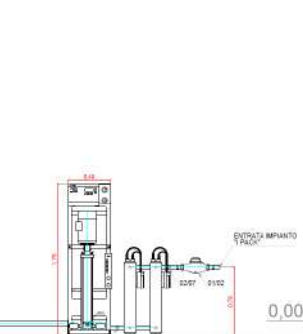
7576

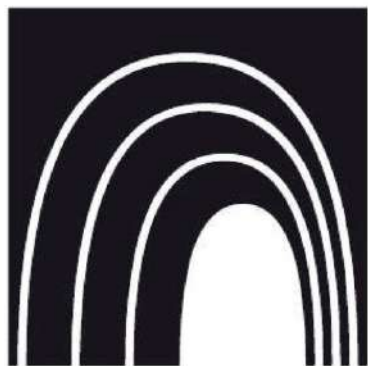


SEZIONE A-A SCALA 1:20



SEZIONE B-B SCALA 1:20





S. PELLEGRINO FLAGSHIP FACTORY
Alderò

CLIENTE
S. PELLEGRINO



www.ecogeo.net



BJARKE INGELS GROUP

PROG. ESECUTIVO / D.L.
**ATELIER
VERTICALE
ARCHITETTI**

VIA NINO COXIA 23
MILANO 20127, ITALY
T +39 39 6247 7591

PROGETTISTA STRUTTURE

sbp

schmidts
berlin partner
SCHWABSTRASSE 43
70372 STUTTGART, GERMANY
T +49 711 64211

PROG. ESECUTIVO STRUTTURE

CREW

VIA CEFALONIA 70
25124 BRESCIA, ITALY
T +39 030 221106

CONSULENTE MOBILITÀ

MIC

mobility in chain
VIA PIETRO CUSTODI 15
MILANO 20136, ITALY
T +39 02 4853 9550

CONSULENTE SOSTENIBILITÀ

BIG

KILVERSLADSGADE 58
2500 VALBY, COPENHAGEN, DK
T +45 7221 7227

CONSULENTE ESTIMO

GAD

VIA M. QUADRO 12
20154 MILANO, ITALY
T +39 02 2903 3672

81 BROADWAY, SUITE 3300
NEW YORK, NY 10003, USA
T +1 347 549 4141

PROGETTISTA PAESAGGIO

WEST 8

333 HUDSON STREET, SUITE 505
NEW YORK, NY 10013, USA
T +1 212 285 0088

PROGETTISTA IMPIANTI

ARUP

CORSO ITALIA 1
MILANO 20122, ITALY
T +39 02 8597 5301

CONSULENTE FACCIASTATA

Front

20 JAY STREET, SUITE 620
BROOKLYN, NY 11201, USA
T +1 212 242 2220

PROGETTISTA ILLUMINOTECNICO

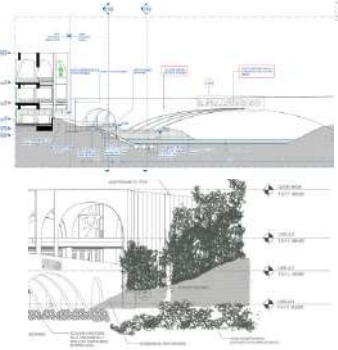
**Piero
Castiglioni**

VIA PRESOLANA 5
MILANO 20135, ITALY
T +39 02 551 3029

BRAND, EXPERIENCE & EXHIBITION

squint/opera

1-5 VYNER STREET
LONDON, E2 9QG, UK
T +44 20 7578 7768



NEW PROJECT 2019-2021





Martedì 24 maggio 2022
Meeting

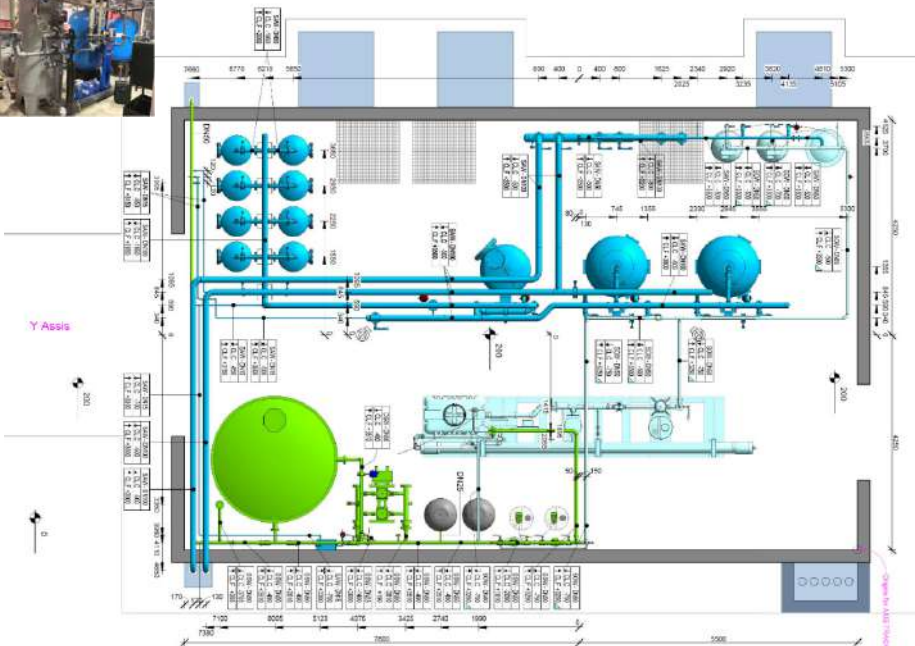
2° EDIZIONE 2022

**C/O DASTE BERGAMO
ex CENTRALE TERMOELETTRICA
Via Daste e Spalenga, 24125 - Bergamo**



2023 CASE STUDIES: Building Construction Monitoring



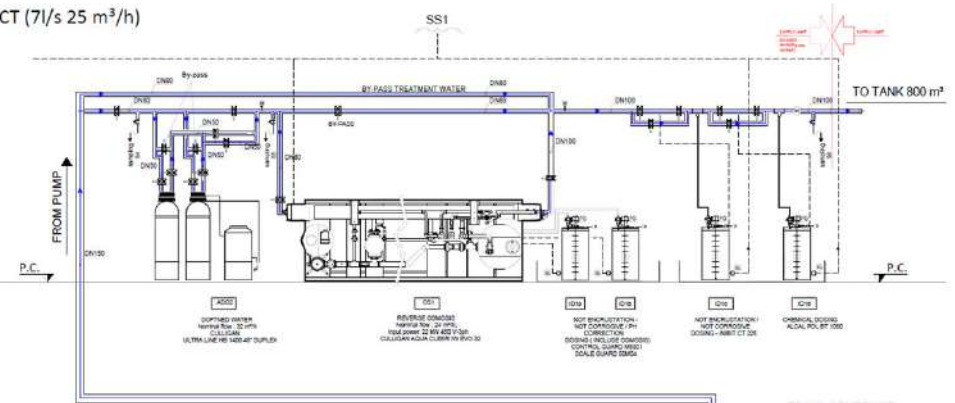


2023, Apocada, Mexico

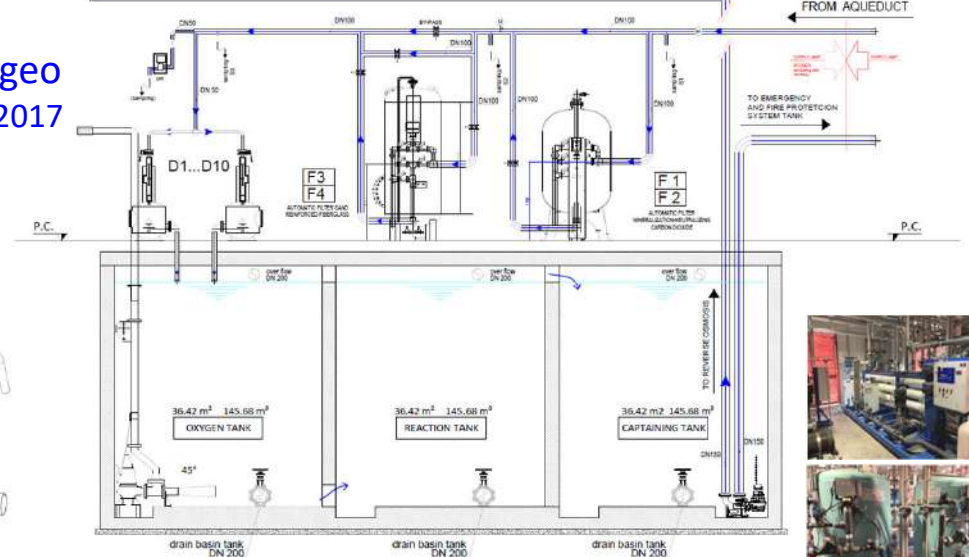
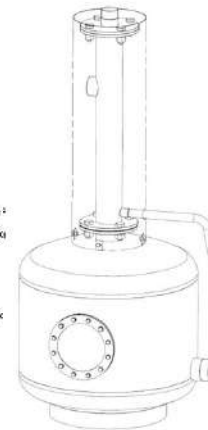
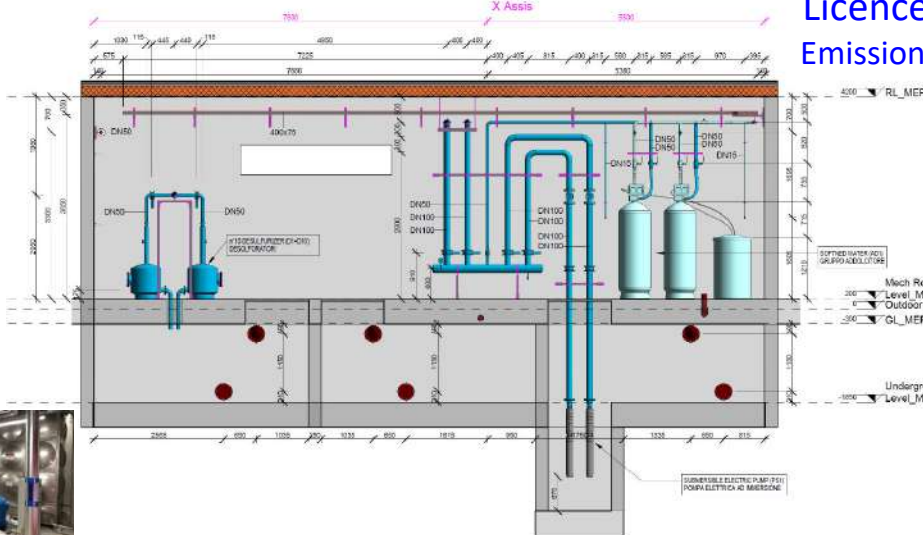
Water treatment plant project for anticorrosive



PROJECT (7l/s 25 m³/h)

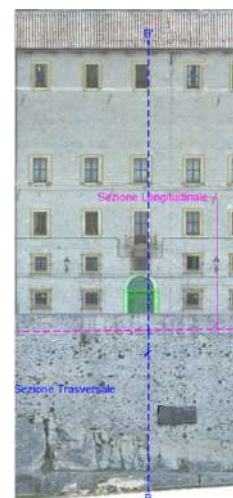


Licence / Patent Ecogeo
Emission 1969 Revision 2017



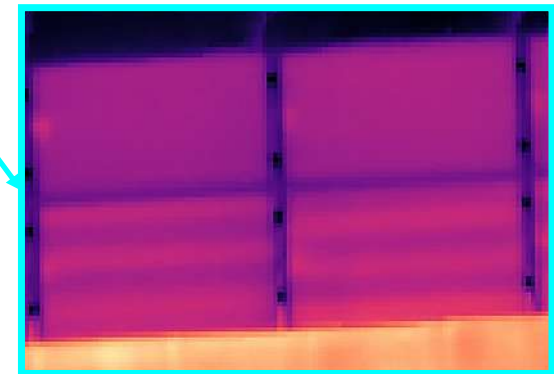
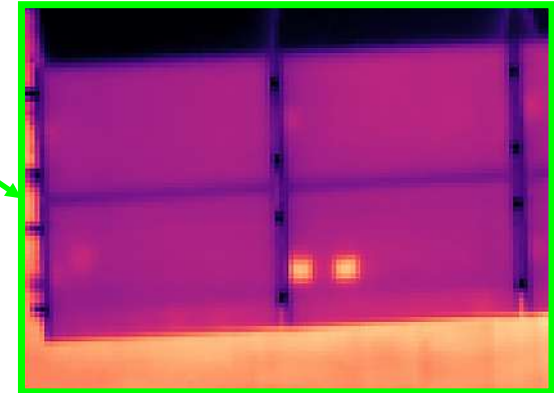
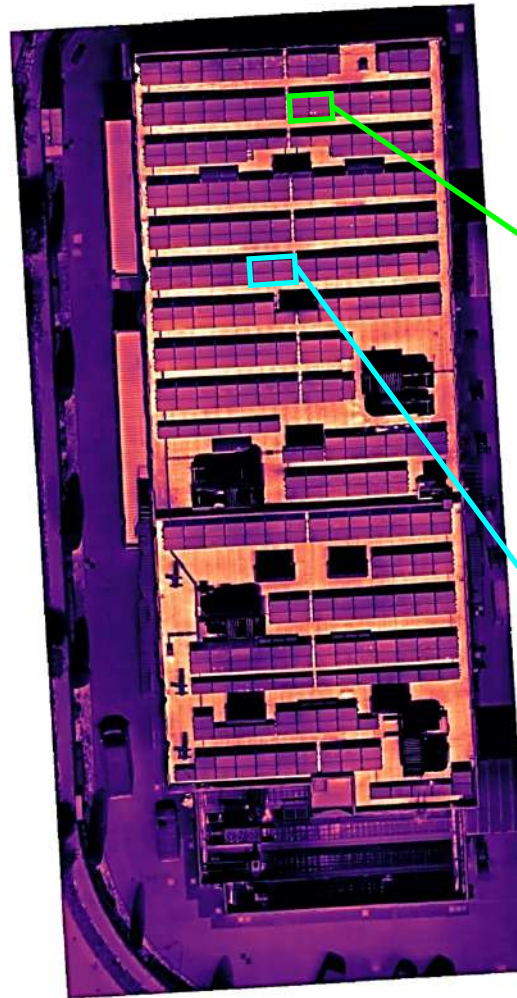


PALAZZO BEGNI



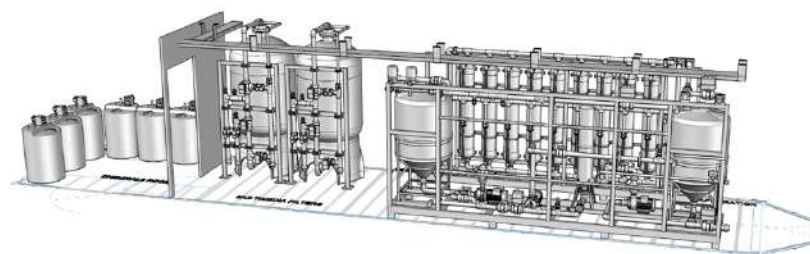
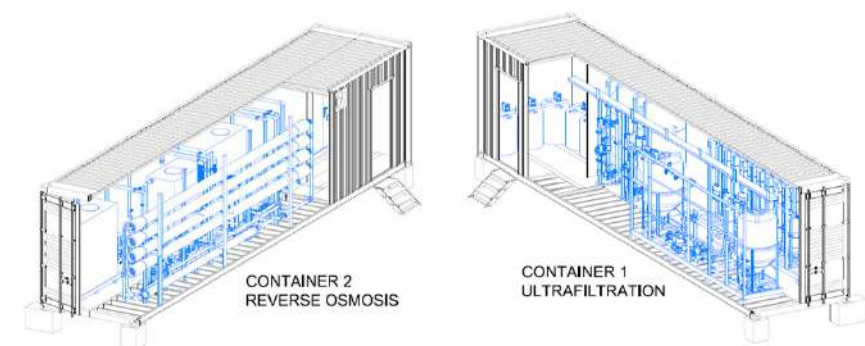
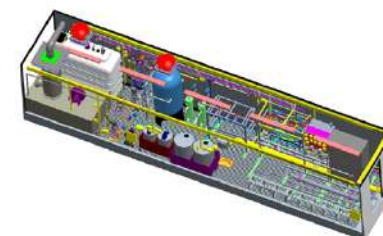
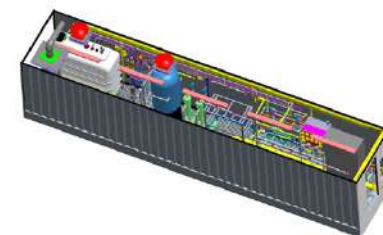
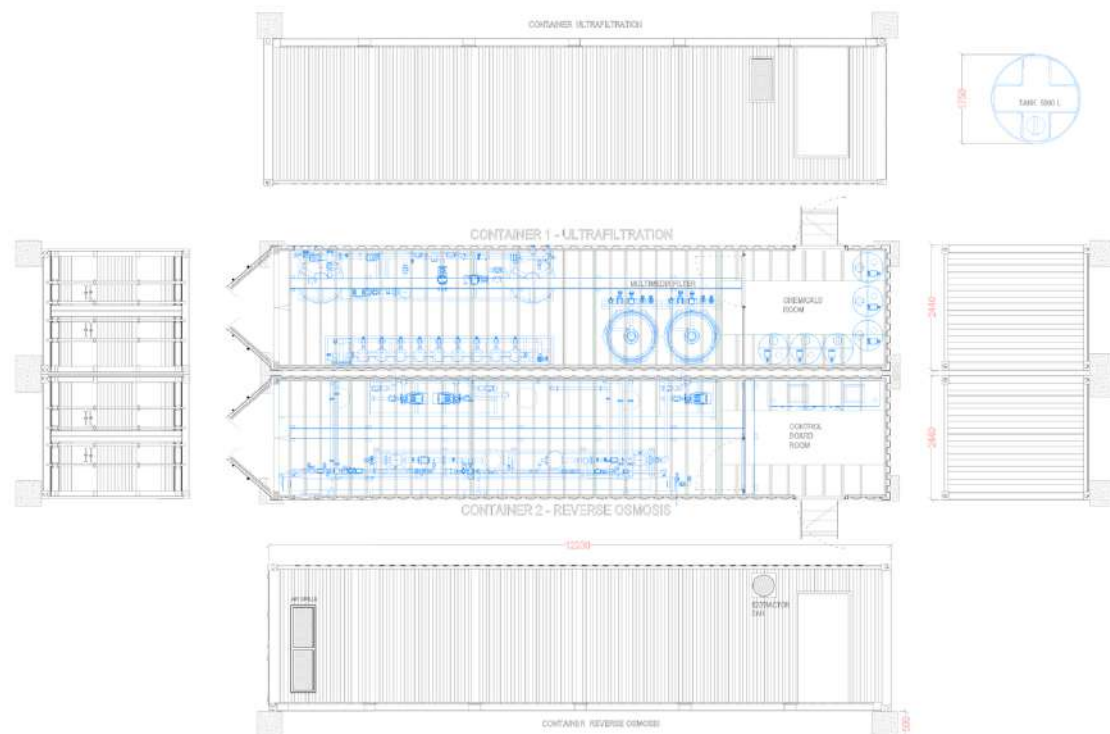
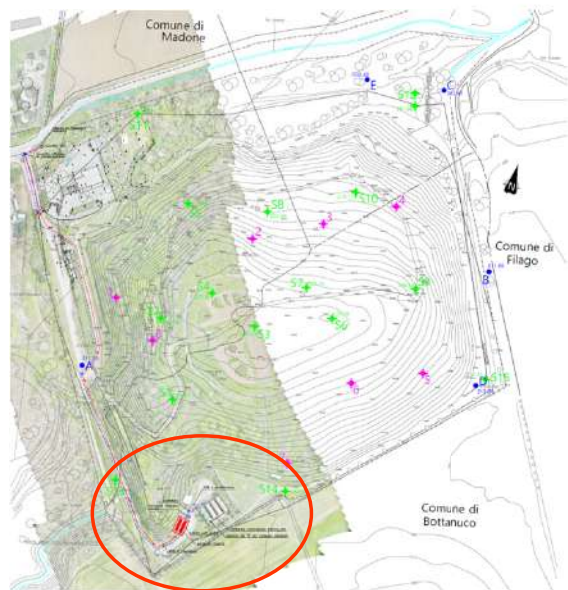
REPUBBLICA DI SAN MARINO
SEGRETERIA DI STATO
TERRITORIO E AMBIENTE
VILLA MALAGOLA, 2023

2023 - CASE STUDIES: Thermal analysis of photovoltaic system



2024, Bergamo, Italy

Reverse osmosis plant in the urban waste landfill



Activated carbon filtration

- Microfiltration
- Ultrafiltration
- UV disinfection
- Antiscalant feeding system
- **Reverse biosmosis**
- Automatic flushing system of membranes
- Chemical washing of the membranes

2024 CASE STUDIES: Confined Space Inspection. 600°C Tank



Caratteristiche

IDEATO E COSTRUITO PER GLI SPAZI INTERNI

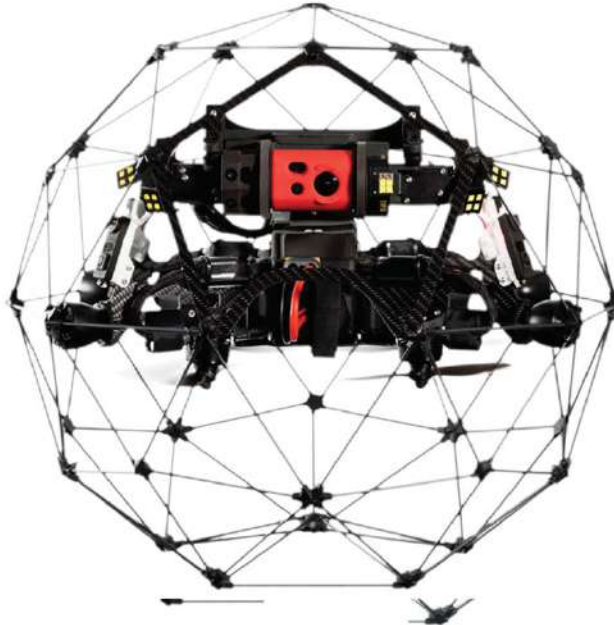
Resistente alle collisioni
Payload resistente agli impatti
Accessibilità agli spazi confinati
Trasmissione wireless

INTUITIVO DA PILOTARE

Stabilizzazione senza l'uso di GPS
Blocco della distanza
Live streaming in full HD

COSTRUITO PER IL TUO SUCCESSO

Facile da mantenere
Addestramento incluso
Team di assistenza dedicato

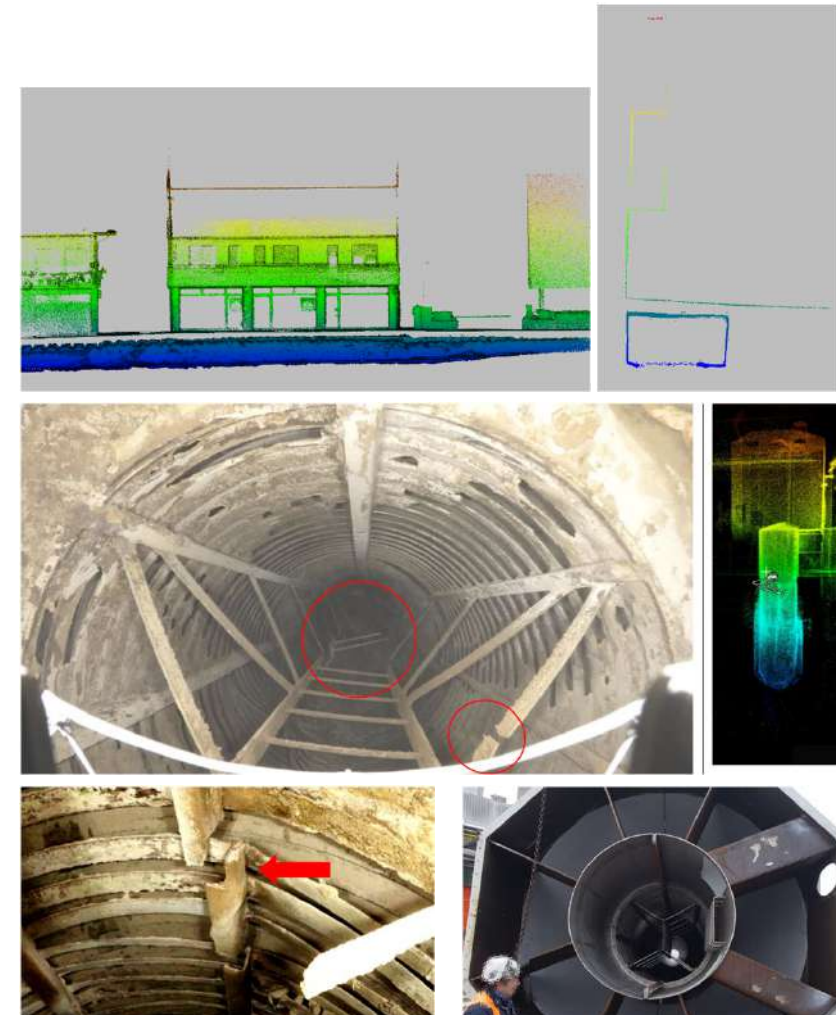


DATI DI QUALITÀ

Ispizioni visuali ravvicinate
Videocamera 4k
Videocamera termica
pod per camera orientabile 180°
Illuminazione regolabile 10k lumen
Illuminazione resistente alla polvere
Luci oblique
Visuale libera da impedimenti

ELABORAZIONE DATI

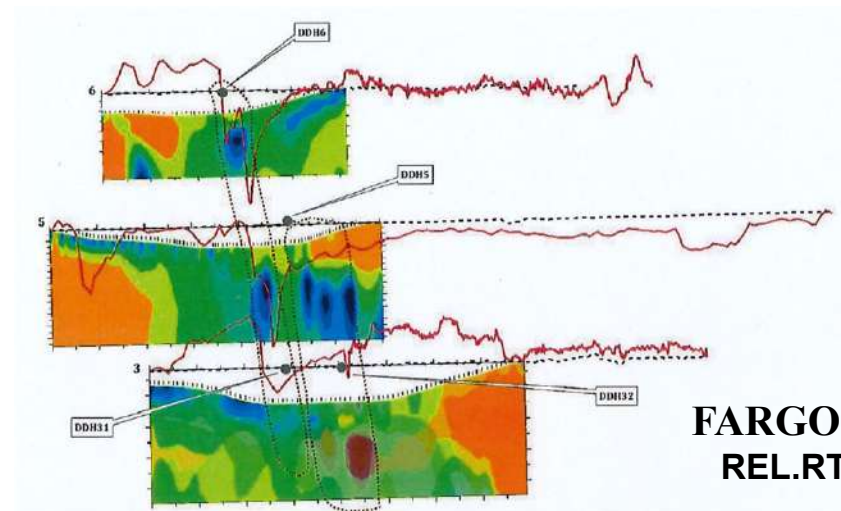
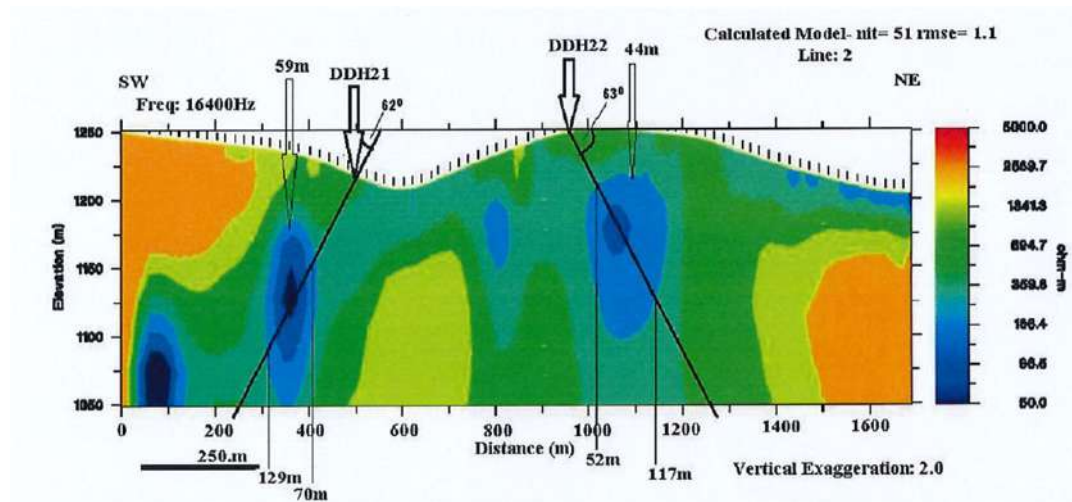
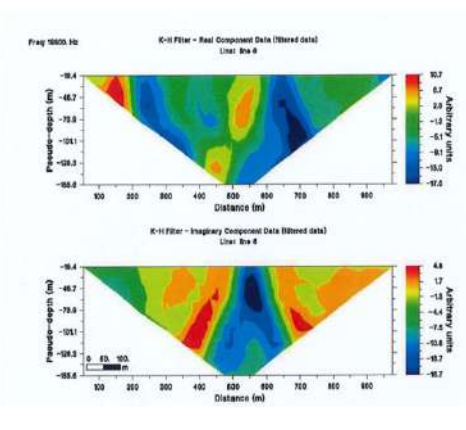
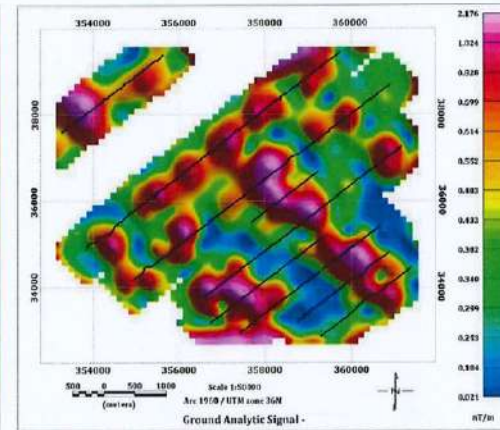
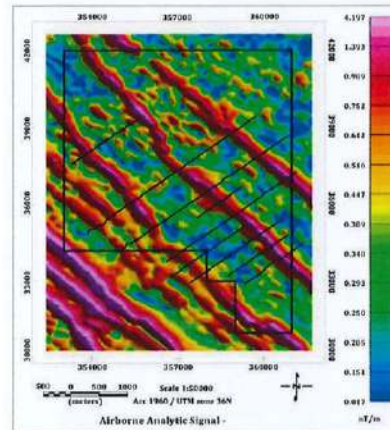
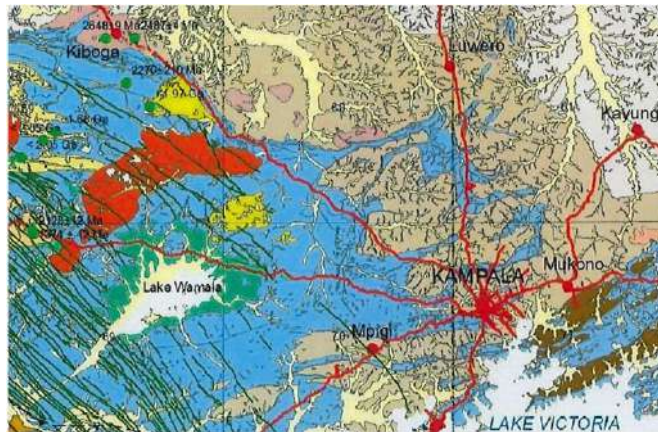
Streamlined data management
Modelli 3D
Misurazioni 2D



DRONES technology continues to improve every day, offering cost-effective solutions and allowing us to access spaces that were previously impossible

2025 - Using magnetics and very low frequency electromagnetics for exploration of gold and base metal mineralization.

Kassanda district, Uganda, Central Africa. Ecogeo Technical Opinion



FARGO SPA, 2025
REL.RT/19570/25